



1 Barleycroft Cottages , Great Hucklow, Buxton SK17 8RG

Saxton Mee

Lettings

1 Barleycroft Cottages

Great Hucklow

Per Calendar Month

£1,150 Per Calendar

This remarkable two bedroom cottage is now available for rent in the highly desirable Great Hucklow, a quintessential Peak District village. The home has been meticulously refurbished throughout and is presented in immaculate condition. Nestled within the National Park, the property is surrounded by breathtaking scenery and offers immediate access to countless outdoor activities. Great Hucklow itself boasts an excellent country pub and a respected primary school, while everyday essentials can be found nearby in Bradwell and Tideswell. The major market towns of Bakewell and Buxton are also a short drive away, providing extensive shopping, dining, and leisure opportunities.

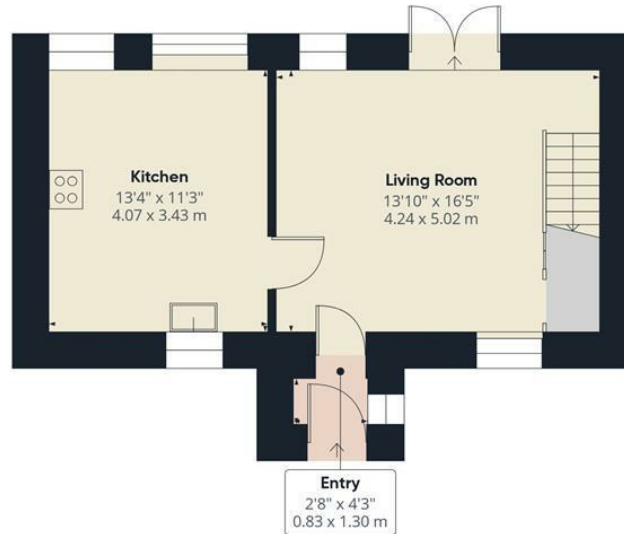
Upon entering the property via the porch, you are greeted by the living room, which offers excellent natural light and direct access to the rear garden through patio doors. The ground floor boasts a brand new fitted kitchen/dining room. Upstairs, the first floor accommodation consists of a master double bedroom, a second double bedroom, and a family bathroom complete with a white three-piece suite and shower. The exterior provides allocated parking spaces to the front and a desirable patio and lawn area to the rear.

This property is offered unfurnished and is available on a 6 or 12 month tenancy. Please note that smoking is not permitted within the property. We are waiting on the EPC rating and the Council Tax Band is B.

- Stunning Two Bedroom Home.
- Located in the desirable village of Great Hucklow, Peak District National Park.
- Bordered by spectacular countryside.
- Benefits from two allocated parking spaces







Ground Floor

Approximate total area⁽¹⁾

784 ft²
72.9 m²



Floor 1



(1) Excluding balconies and terraces

Calculations reference the RICS IPMS:
3C standard. Measurements are
approximate and not to scale. This
floor plan is intended for illustration
only.

GIRAFFE360

While we endeavour to make our sales particulars fair, accurate and reliable, they are only a general guide to the property and, accordingly, if there is any point, which is of particular importance to you, please contact the relevant office. The Agents have not tested any apparatus, equipment, fittings or services and so cannot verify they are in working order. The buyer is advised to obtain verification. Please note all the measurement details are approximate and should not be relied upon as exact. All plans, floor plans and maps are for guidance purposes only and are not to scale. Under no circumstances should they be relied upon as exact or for use in planning carpets and other such fixtures, fittings or furnishings. YOUR HOME IS AT RISK IF YOU DO NOT KEEP UP REPAYMENTS ON A MORTGAGE OR OTHER LOAN SECURED ON IT. 'A Life Assurance policy may be requested.' 'Written Quotations of credit terms available on request.'

Banner Cross
T: 0114 268 3241
E: bannercross@saxtonmee.co.uk
www.saxtonmee.co.uk

Hathersage
T: 01433 650009
E: hathersage@saxtonmee.co.uk

Bakewell
T: 01629 815307
E: bakewell@saxtonmee.co.uk

Matlock
T: 01629 828250
E: matlock@saxtonmee.co.uk



Lettings